

AT09 Quick Setup Guide

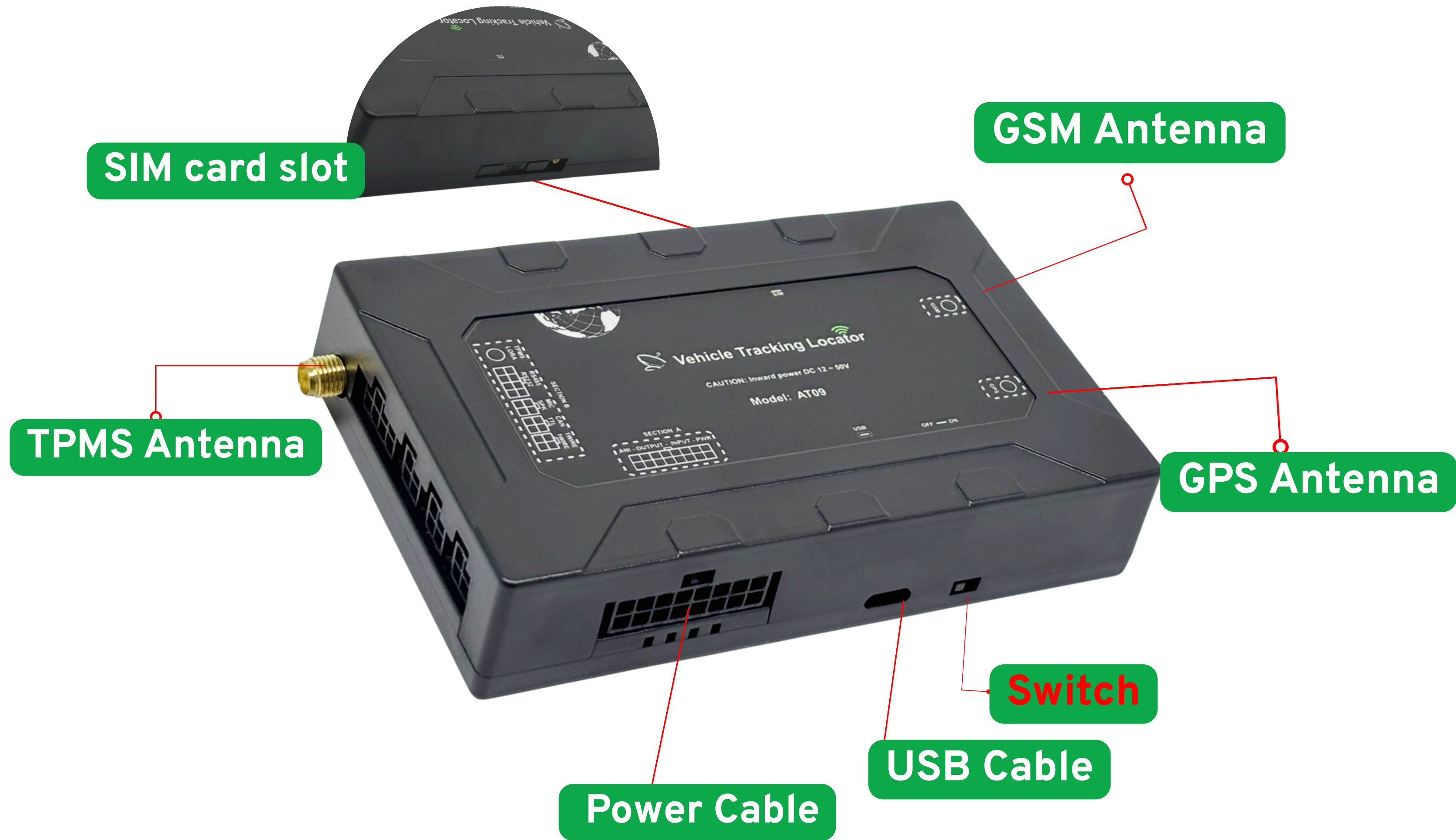
Thank you for choosing the **AT09 GPS Tracker**. This device is a reliable and highly customizable telematics solution designed for trucks, heavy vehicles, and industrial fleets.

The **AT09** provides basic **GPS tracking** as standard and can be customized with the following optional features:

- **TPMS** (Tire Pressure Monitoring System)
- **Wi-Fi Hotspot Function**
- **All-in-One Integration** (GPS + TPMS + Wi-Fi)

Please consult your supplier to confirm which features are enabled on your device.





SIM card slot

GSM Antenna

TPMS Antenna

GPS Antenna

Power Cable

USB Cable

Switch

AT09 Port Overview

Connect all antennas, the power cable, and the USB cable.

Note:

- 1. Use your own standard USB cable; the provided USB cable is reserved for TP09 and TP07 devices only.
- 2. Place the **GPS antenna outside the window.**



AT09 Configuration Instructions

1. Connect to PC

Use the provided configuration cable to **connect the AT09** device to your computer.

2. Power On

Slide the power switch to **turn on the device**.

3. Launch Configuration Software AT09-4G_Configuration_Manager.exe

On your computer, open the AT09 configuration software.

4. Enter Password

When prompted, enter the default **password: 000000**.

5. Read Device Settings

Click the **“Read”** button to load the current settings from the device.

6. Set APN (Refer to the APN list in the appendix if needed.)

Some SIM cards in different countries may require manual APN configuration for the GPS device to connect to the internet properly. **Contact your SIM card provider for the correct APN if unsure.**

7. Save Changes

If you make any changes, make sure to click **“Save”** to apply and store the new settings.

TPMS Configuration via Software

1. Enter Password and Load Settings

Launch the configuration software, enter the password **000000**, and click “Read” to load the current device settings.

2. Open TPMS Settings

Click on the “**TPMS**” tab to access the tire pressure monitoring configuration page.

3. Input Sensor Information

Enter the Sensor ID provided with your TPMS sensor, and assign the corresponding Tire Position Number.

4. Save Settings

After entering the sensor data, click “Save” to store the configuration.

5. Wait for Pressure Data

The system will begin to receive real-time pressure values. Please wait a few moments for the data to appear.



sensor ID

Configuration Manager

Configurator
TPMS
Ver: 4.13

Read from dev

Save to dev

000000

Initialize

Reboot

Import cfg file

Export cfg file

Device: AT09-4G
Comms module: EG91x
Ver: V1.0.7
Complied: 24.11.15-16:44:17
433 Receiver: Ready-FSK
Working mode: Normal
IMEI: 867747079360630
RFID/IB:0000000000000000
ANI1:0.0v ANI2:0.0v
ANI3:0.0v ANI4:0.0v
Cell ID:27A72D32A0F
Cellular CSQ:27
GNSS satellite:11
Lon:11404.40532E
Lat:2237.50114N
Data in memory:0000
Movement: stop 3Axis:0001
IP/Port: www.longtrac.com:7781
connect status:Connect OK
Temperature1/2 : 0/0°C
RS232 1: RFID
RS232 2: NULL
RS485: NULL
Run time(mins): 0026

Battery:3.96v	SOS		
External:0.000v	GPS		
DI1	DI2	DI3	DI4
DO1	DO2	DO3	DO4

Comms Schedule Authorization IOs Audio Geofence SMS Peripheral Behavior TPMS WIFI Unit Test

TPMS

TPMS Data Time (Seconds): 120 Temperature H/L 50 °C -10 °C

Pressure Unit: KPa Pressure H/L 1000 Psi 0 Psi

Receive all sensor data: ?

	TPMS ID	ReceiveTime	Pressure	CellVoltage
	23B0AA2621	15:17:25	172 KPa	3260 mv
	24B0AA21DF	15:17:25	172 KPa	3270 mv
▶	31B0AA2392	15:17:26	172 KPa	3260 mv
*				

Position ID diagram

For TPMS ID, it should include Position ID with sensor ID (the sensor ID is sticking on the sensor body). e.g. : sensor install on 81 position, e.g. : sensor install saved into device is: 816EC8A8E8

Pressure value KPa 0 Psi Convert extend

Tire Position Number+sensor ID

sensor data string:22B086BB1406051C612A0FBB
sensor id: B086BB14
sensor kpa: 0

sensor data string:22B086BB8206141CE12BE9BB
sensor id: B086BB82
sensor kpa: 0

sensor data string:22B086BB1405F31C912AEABB
sensor id: B086BB14
sensor kpa: 0

sensor data string:22B086BB82061F1CF12BF2BB
sensor id: B086BB82
sensor kpa: 0

Show log:

Clear

Open log folder

Tire Position Number

USB HID Connecting

AT09 WiFi Hotspot Setup

1. Insert a SIM Card

Place an active SIM card with a data plan into the device's SIM card slot.

2. Enable WiFi in the Configuration Software

Open the AT09 configuration software and go to the WiFi settings section. Enable the WiFi hotspot function.

3. Set a 9-Digit Password

Modify the WiFi password to a 9-digit number for security and compatibility.

Configuration manager

Configurator TPMS

Ver: 4.13

Read from dev 000000 Initialize Import cfg file

Save to dev Reboot Export cfg file

Comms Schedule Authorization IOs Audio Geofence SMS Peripheral Behavior TPMS **WIFI** Unit Test

WIFI SSID: AT09_WIFI

WIFI Password: 123456789

9-digit number

Device: AT09-4G
Comms module: EG91x
Ver: V1.0.2
Complied: 25.03.17-14:35:20
433 Receiver: Ready-FSK
Working mode: Normal
IMEI: 866989056996520 ?
RFID/IB:0000000000000000
ANI1:0.0v ANI2:0.0v
ANI3:0.0v ANI4:0.0v
Cell ID:27A72D32A0F
Cellular CSQ:28
GNSS satellite:09
Lon:11404.37826E
Lat:2237.50176N
Data in memory:0000
Movement: stop 3 Axis:0003
IP/Port: www.longtrac.com:7781
connect status:Connect OK
Temperature 1/2 : 0/0°C
RS232 1: RFID
RS232 2: NULL
RS485: NULL
Run time(mins): 0024

Battery:3.71v	SOS		
External:12.73v	GPS		
DI1	DI2	DI3	DI4
DO1	DO2	DO3	DO4

Log window

```
22C029E5A305F81AB134EFBB
sensor id: C029E5A3
sensor kpa: 0
GSM Reply: +CGREG: 2,1,"27A7","2D32A0F",7
GSM Reply: OK
release
GSM CMD: AT+CSQ
GSM Reply: +CSQ: 28,99
GSM Reply: OK
GSM CMD: AT+CGREG?
GSM Reply: +CGREG: 2,1,"27A7","2D32A0F",7
GSM Reply: OK
```

USB HID Connecting

Longtrac Real-Time Monitoring Platform

Longtrac is our online management platform designed for real-time GPS tracking and TPMS monitoring. It is ideal for fleet positioning, tire pressure monitoring, and remote device control.

Key Features:

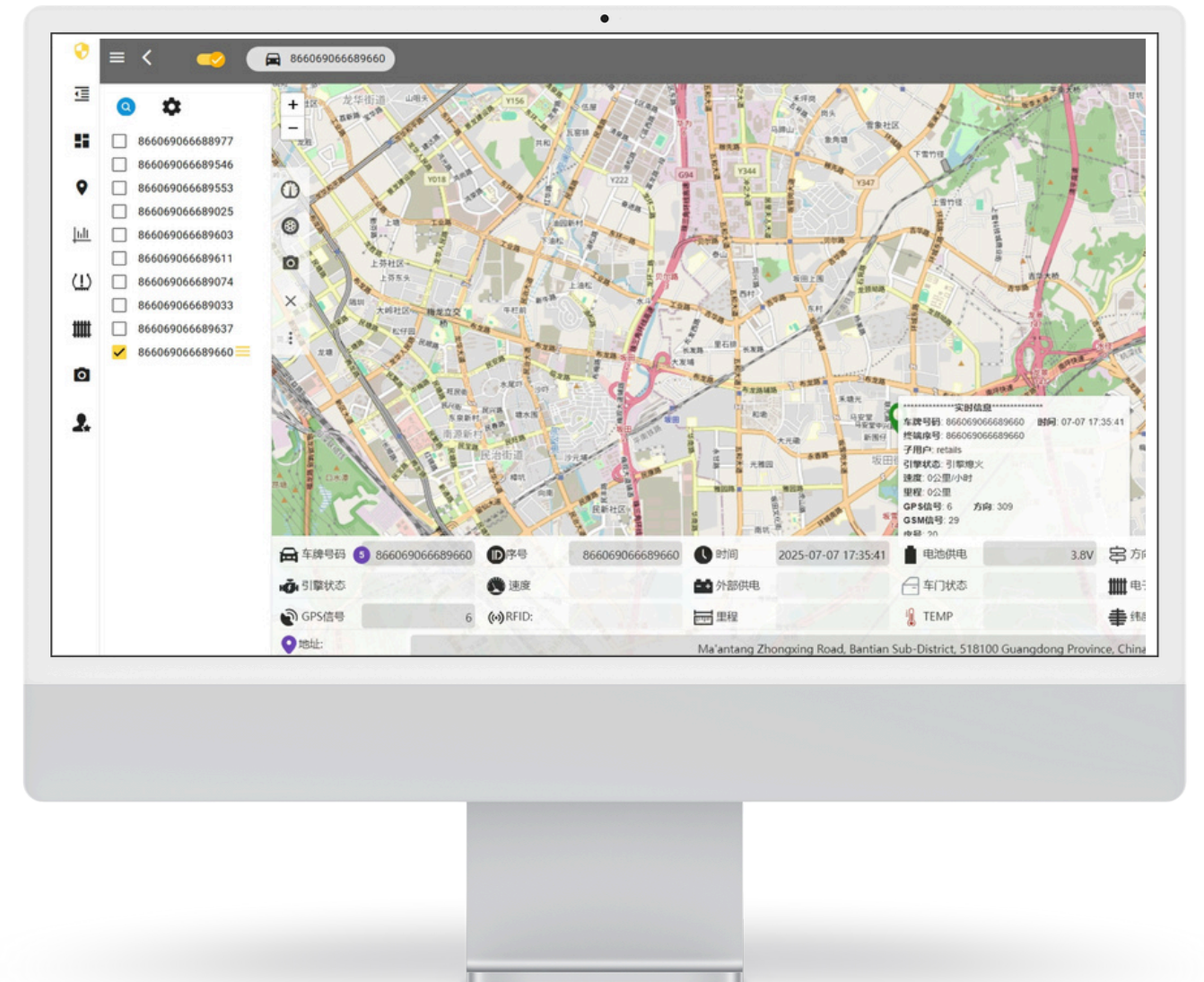
Live GPS Tracking: View vehicle location, status, speed, voltage, etc.

TPMS Monitoring: Supports up to 42 tires; shows pressure, temperature, and battery level.







Remote Management: Historical route playback and real-time alerts.

Signal Status: Displays GPS and GSM signal strength.

Map View: Switch between standard and satellite map modes.



AT09 Full-Function Version – Accessories List(GPS + TPMS + WiFi)

Product	Photo	Quantity
AT09		1
GPS antenna		1
TPMS antenna		2
Power cable		1
SMA T-Adapter		2
GSM antenna		1

APN list

国家	运营商	APN 设置
美国	AT&T	nxtgenphone
	T-Mobile	fast.t-mobile.com
英国	Vodafone	internet
德国	Telekom	internet.t-mobile
马来西亚	Maxis	unet
澳大利亚	Telstra	telstra.internet
菲律宾	Globe	internet.globe.com.ph
印度	Jio	jionet